



## **ARTEL Pipette Tracker™**

### ***Automated Pipette Calibration Software for the ARTEL PCS® Pipette Calibration System***

#### **DESCRIPTION**

ARTEL Pipette Tracker software is a total management system for quality control of any pipette population. It is tightly integrated with the ARTEL PCS®, making it an easy to use solution for your pipette calibration needs.

ARTEL Pipette Tracker facilitates the scheduling of calibrations, automates data collection during calibrations and produces all required reports. Once the pipette database is initialized, Pipette Tracker will automatically report which pipettes are due for service. Pipette Tracker eliminates the risk of transcription errors by capturing the results of pipette calibrations directly into the database.

#### **SYSTEM REQUIREMENTS**

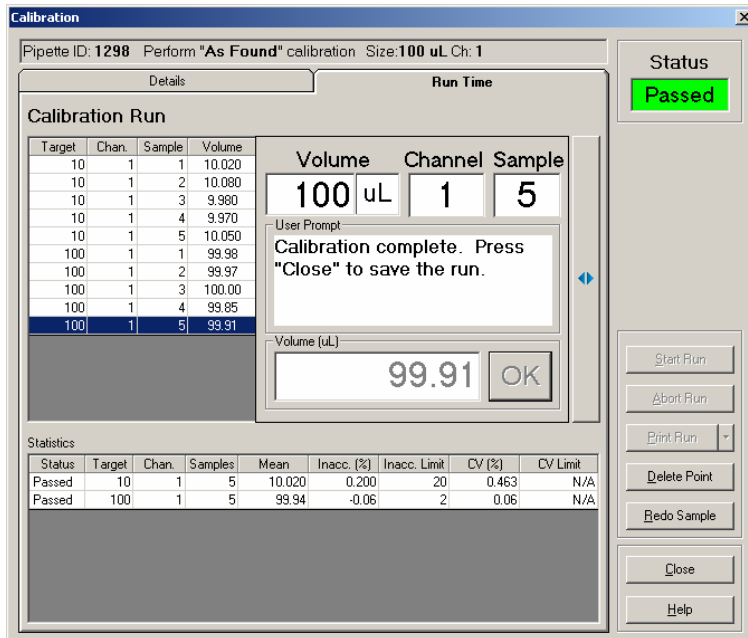
Windows® 2000 or Windows® XP. Service Pack 1, or higher  
Pentium II class processor at 200 MHz, or better  
Minimum RAM: Windows® 2000: 128MB; Windows® XP: 256MB  
Microsoft Office Chart Version 10.0  
Free hard disk space: 50MB  
CD-ROM drive and Mouse pointing device  
Display monitor: Super VGA at 1024x768  
One available RS232 COM port or serial-to-adaptor with an available USB port

#### **FEATURES**

- Immediate display and automatic storage of volumetric results.
- Immediate pass/fail result based on your SOPs.
- Automatic reporting to virtually any printer or file type.
- Automatic scheduling of pipettes due for calibration.
- Meets GLP, NCCLS, and ISO 9000 requirements.
- Manufacturer database of models and calibration specifications.
- Trend reports for pipette calibration performance over time.
- Bar code scanning to quickly and accurately identify pipettes.\*
- Automatic printing of pipette calibration and bar code labels.\*

\* Requires the purchase of PCS-795: Pipette Tracker Enhancements Hardware Package including Label Printer and Bar Code Reader.

## AUTOMATIC TESTING



- Easy to read prompts.
- Internal SOPs easily input and automatically enforced.
- Volumetric results displayed immediately.
- Summary statistics calculated automatically.
- Pass/Fail status applied automatically.

## AUTOMATIC SCHEDULING & REPORTING


Due Date	Pipette ID	Description	Status	Location	Owner	Interval	Method	Test Plan
9/18/2003	1358404954	Gilson Pipetman P-100, vari	AC - Due			01	Quick Check	100 uL, fixed
9/18/2003	1358404954	Gilson Pipetman P-100, vari	AC - Due			02	Control Calibration	100 uL, variable
9/18/2003	1358404954	Gilson Pipetman P-100, vari	AC - Due			03	Performance Specificati	100 uL, variable
9/18/2003	1423368380	BIOHIT Proline 100, variab	AC - Due	Lab 11		01	Quick Check	100 uL, fixed
9/18/2003	1423368380	BIOHIT Proline 100, variab	AC - Due	Lab 11		02	Control Calibration	100 uL, variable
9/18/2003	1423368380	BIOHIT Proline 100, variab	AC - Due	Lab 11		03	Performance Specificati	100 uL, variable
9/18/2003	1929174195	Gilson Pipetman F-100, fixe	AC - Due			01	Quick Check	100 uL, fixed
9/18/2003	1929174195	Gilson Pipetman F-100, fixe	AC - Due			02	Control Calibration	100 uL, fixed
9/18/2003	1929174195	Gilson Pipetman F-100, fixe	AC - Due			03	Performance Specificati	100 uL, fixed

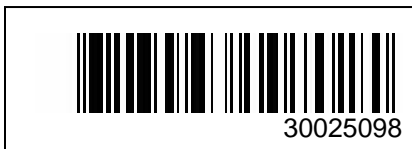
- Scheduled calibrations appear on Worklist for immediate reference.
- Up to three configurable intervals available for each pipette.
- Automated reporting of test results, work lists, inventory, protocols, and device history.
- User defined report templates fully customizable with built in ActiveReports™ Designer.
- Reports exported as a variety of formats – PDF, XLS, CSV, TIF, RTF, HTML, and TXT.
- Data reported through user-configurable filters.

**BAR CODE / CALIBRATION LABELS\***

- Enables fast and accurate pipette identification using bar codes.
- Automates and standardizes calibration labels in a readable format containing essential information indicating calibration status.

\* Requires purchase of PCS-795: Pipette Tracker Enhancements Hardware Package including Label Printer and Bar Code Reader.


	Pipette ID:	30025098
	Type of Pipette:	GilsonC300
	Calibrated By:	BWS
	Calibrated On:	05-May-2006
	Status:	Passed
	Next Due:	05-Oct-2006

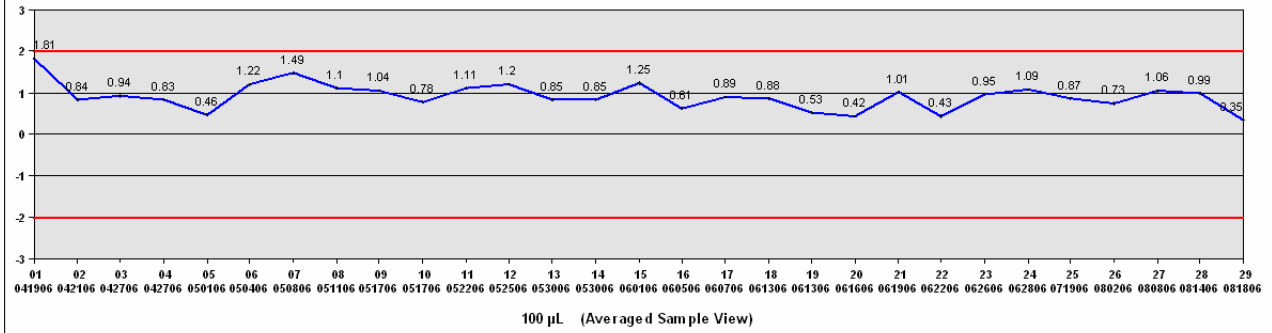
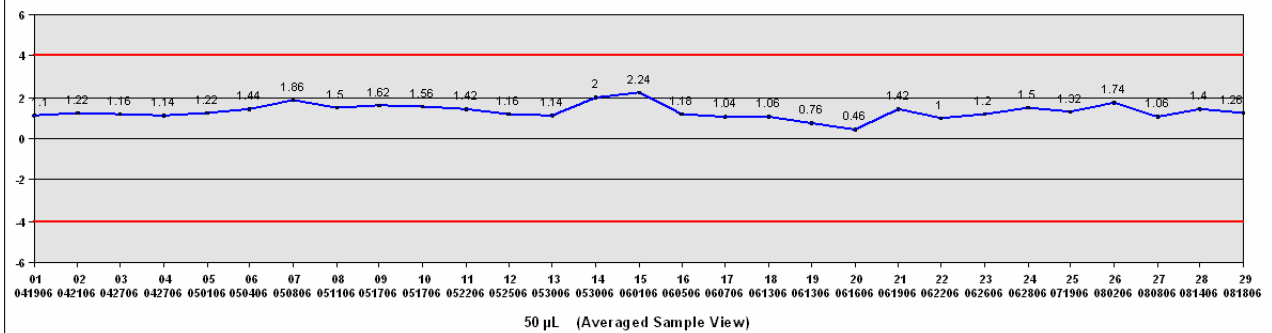


**TREND REPORTS**

- Calibration reports with graphs showing the number of data points for each sample.
- Graphical representation of all calibrations performed on a given pipette sorted by date.
- Comparison reports of pipette performance for “As Found” vs. “As Calibrated” data.
- Calibration Summary Reports for all pipettes sorted by date.

**ARTEL PCS - Pipette Trend Analysis Report - Inaccuracy % vs Calibration**

<b>Date:</b> 10/9/06	<b>Time:</b> 8:32:14 AM	<b>Customer:</b>	25 Bradley Drive Westbrook Maine, USA Phone: 207-854-0860	
<b>Pipette ID:</b> Grimble100-1		<b>Contact:</b>		
<b>Description:</b>		<b>Location:</b>		
<b>Method:</b> Quick Check		<b>Address:</b>		
<b>Test Plan:</b> Grimble 100				



Method Conformity: The photometric pipette calibration method meets specifications as outlined in ISO 8655-7.

Reviewed by: \_\_\_\_\_ Date: \_\_\_\_\_ at \_\_\_\_\_

Printed Date: 10/9/06 Printed Time: 8:32:14 AM